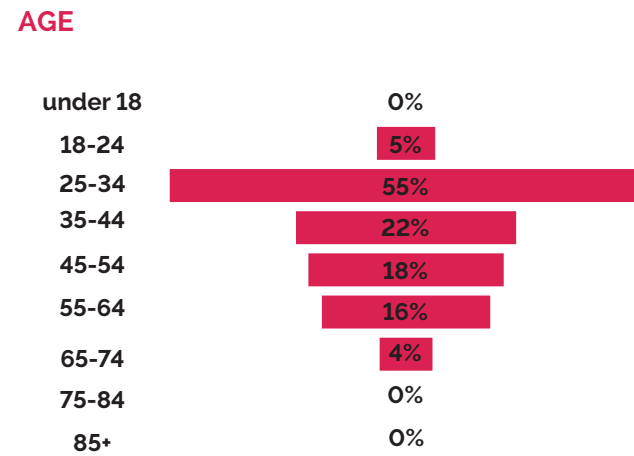
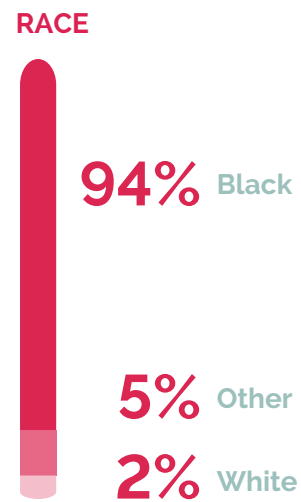
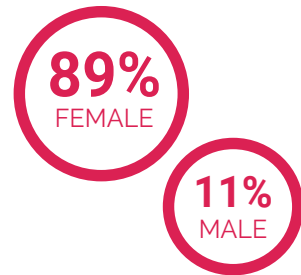


overview of survey respondents

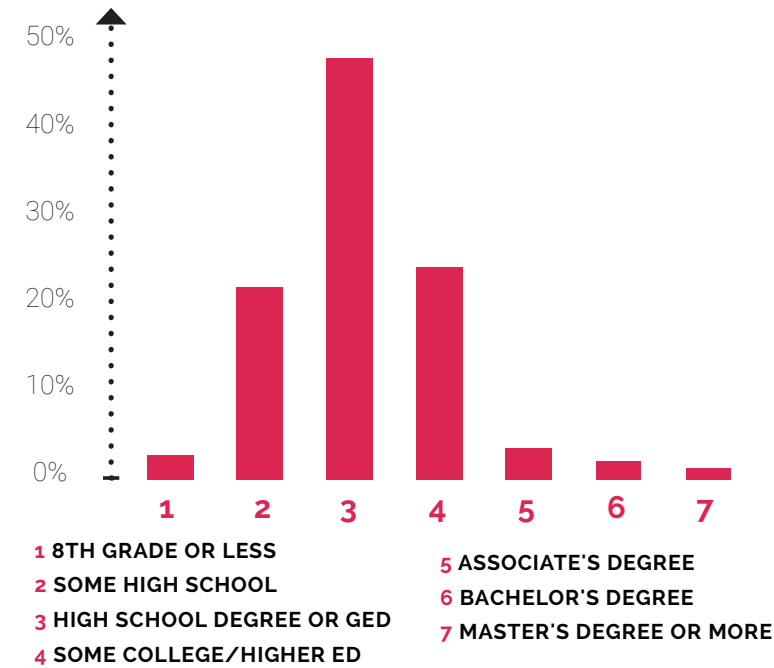
Over 51% of Bartram Village households completed a needs assessment survey. In contrast, 89 people from the surrounding community of nearly 40,000 completed a neighborhood survey.

BARTRAM RESIDENT SURVEY TAKERS

260
HOUSEHOLDS
(52% of total households)

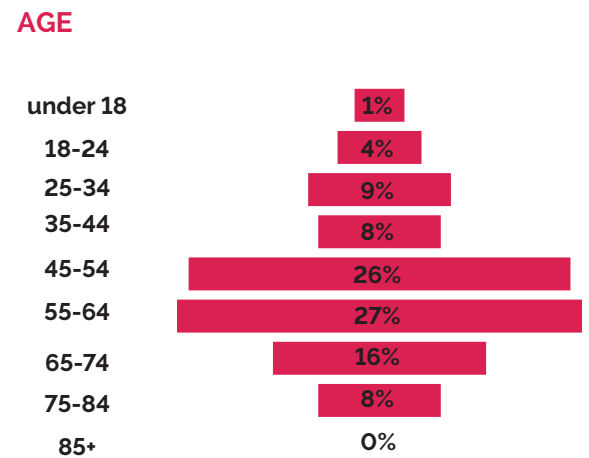
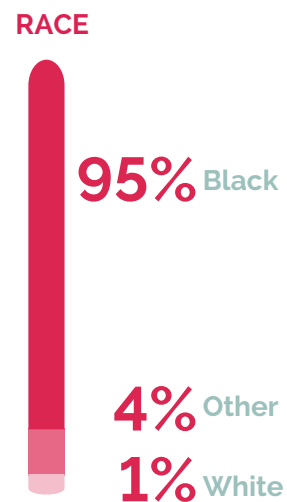
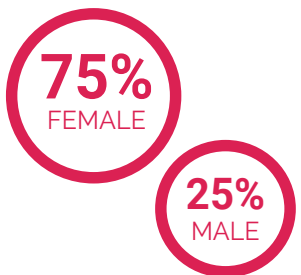


HEAD OF HOUSEHOLD EDUCATIONAL ATTAINMENT

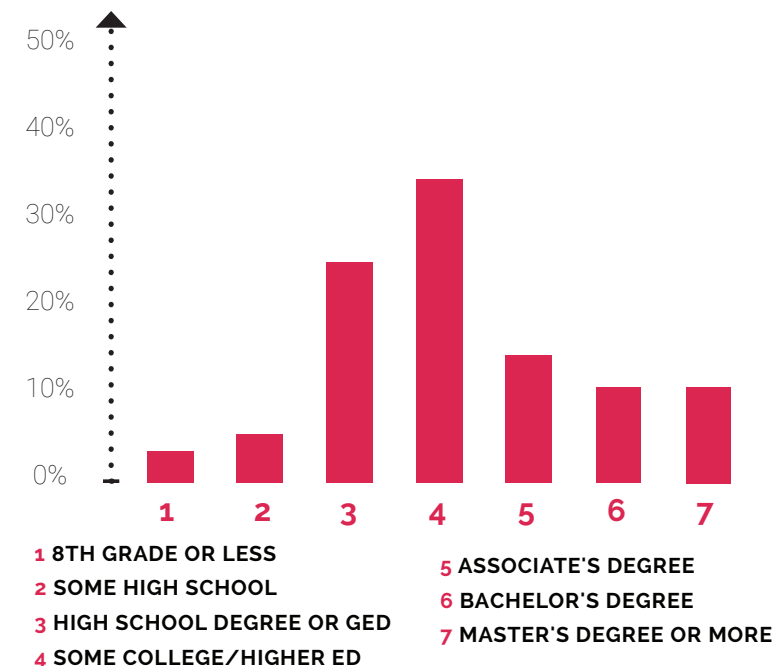


NEIGHBORHOOD SURVEY TAKERS

89
RESPONDENTS



HEAD OF HOUSEHOLD EDUCATIONAL ATTAINMENT



BARTRAM VILLAGE OVERVIEW

- 22** acre site
- 41** residential apartment buildings
- 500** units
- 1,056** bedrooms
- 1,048** residents
- 20** median age of residents
- 48%** of residents are 18 or younger
- 10%** of residents are 55 or older
- 1942** year built as temporary housing

THIS INFORMATION PROVIDED BY PHA

the redeveloped bartram village

A high number of residents would like to return to the redeveloped Bartram Village site if they have to move offsite while it is being redeveloped. Bartram residents also expressed a strong interest in buying a home and participating in programs focused on homeownership. They also indicated the need for housing to accommodate special needs.

WOULD YOU LIKE TO RETURN TO THE REDEVELOPED HOUSING SITE WHEN IT IS COMPLETE?



IF YOU NEED TO MOVE TEMPORARILY WHILE BARTRAM VILLAGE IS BEING REDEVELOPED....

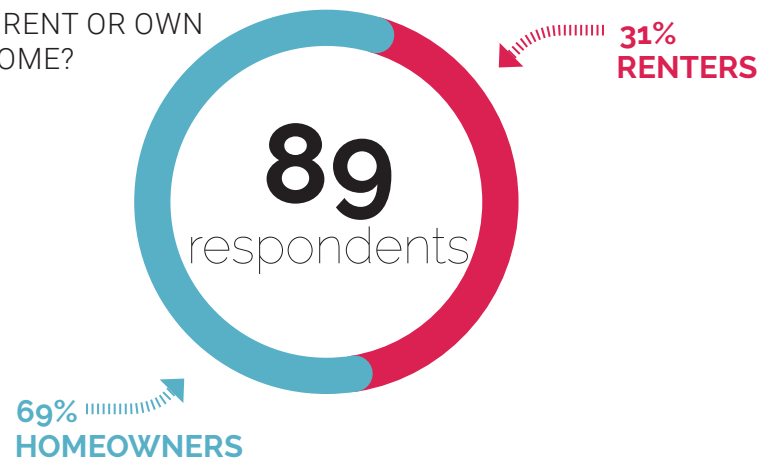
WOULD YOU LIKE TO REMAIN IN THE IMMEDIATE NEIGHBORHOOD?



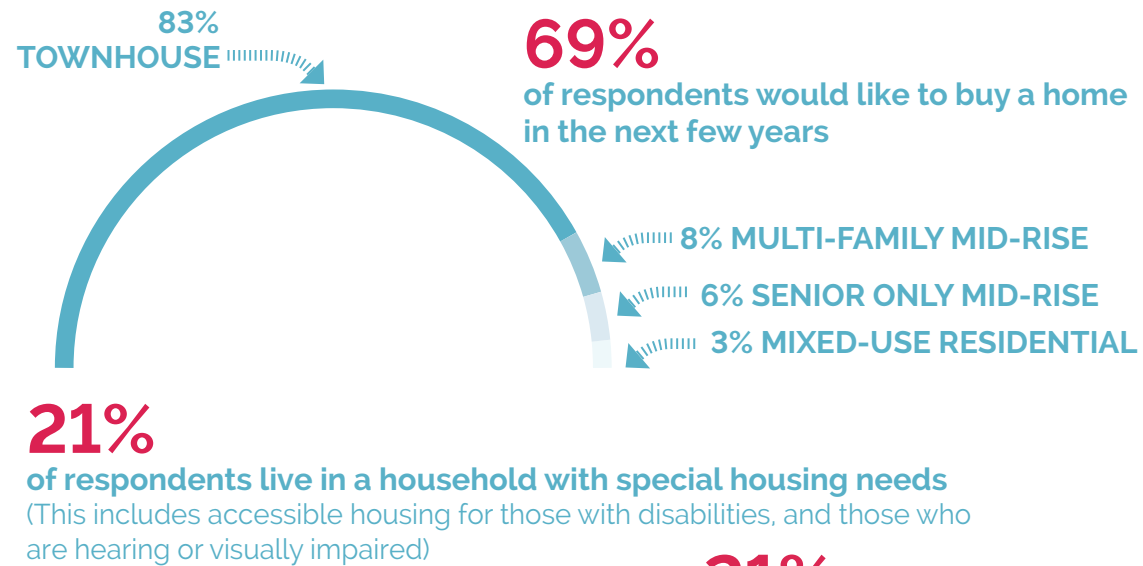
neighborhood housing profile

Based on the responses to the Neighborhood Survey, there is a strong percentage of homeowners in the neighborhood. The majority of respondents have lived in their current home for over 10 years, suggesting strong ties to the neighborhood. While the top reason respondents chose to live in their current is affordability, many other reasons involve family and friends or growing up nearby.

DO YOU RENT OR OWN YOUR HOME?

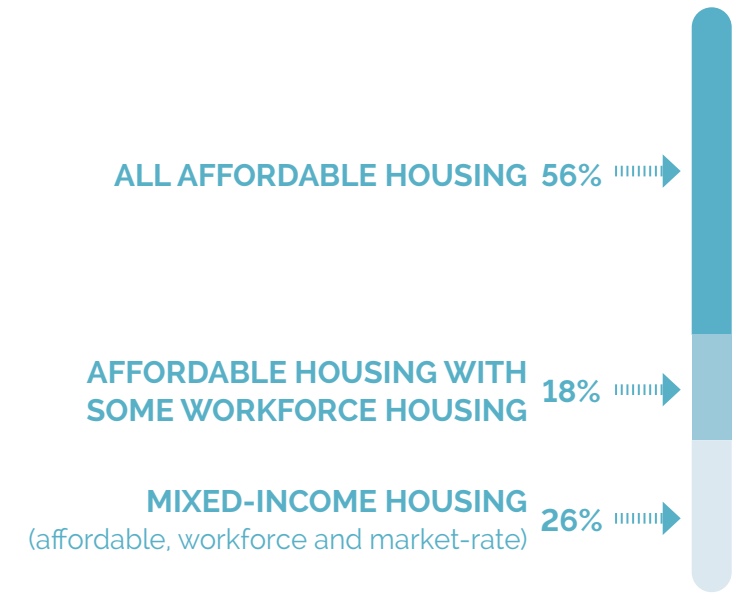


WHAT TYPE OF HOUSING WOULD YOUR HOUSEHOLD MOST LIKE TO LIVE IN?

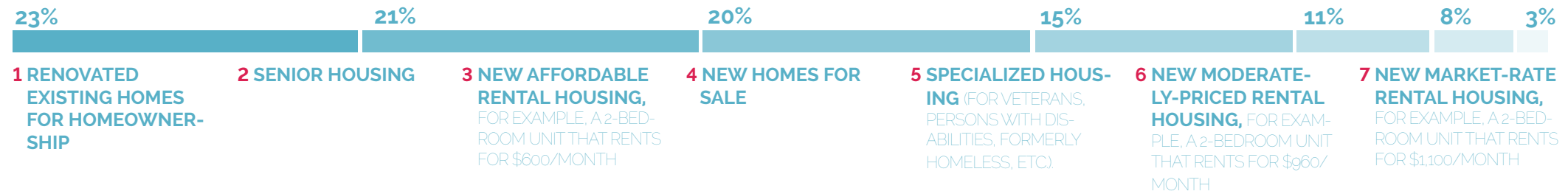


21% of Bartram Village respondents think their household will grow in the next year

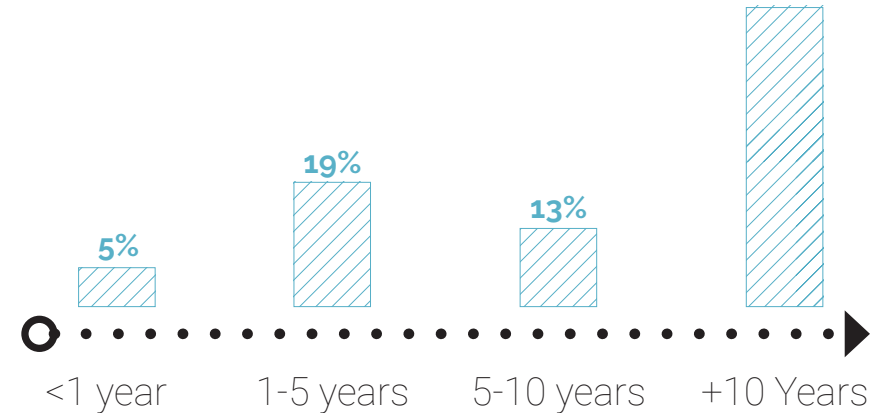
WHAT TYPE OF HOUSING WOULD YOU LIKE TO SEE ON THE SITE OF A REDEVELOPED BARTRAM VILLAGE?



WHAT TYPE OF HOUSING DOES YOUR HOUSEHOLD THINK IS NEEDED IN THE NEIGHBORHOOD?



HOW LONG HAVE YOU OWNED OR RENTED YOUR CURRENT HOME?



WHY DID YOU CHOOSE TO LIVE IN YOUR CURRENT HOME?

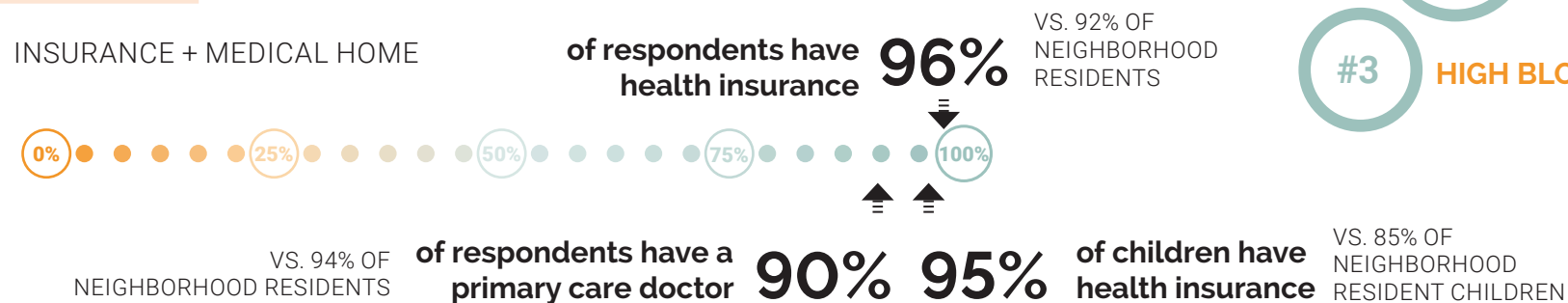




health profile

A relatively high percentage of Bartram Village and neighborhood residents have health insurance and a primary care doctor (or office) to visit when in need of care. In general, the availability of most health-related services seems high with a few exceptions, including substance abuse support and domestic violence resources. Bartram Village and neighborhood residents ranked the quality of care "good" to "very good" with the exception of substance abuse and addiction services, and vision care.

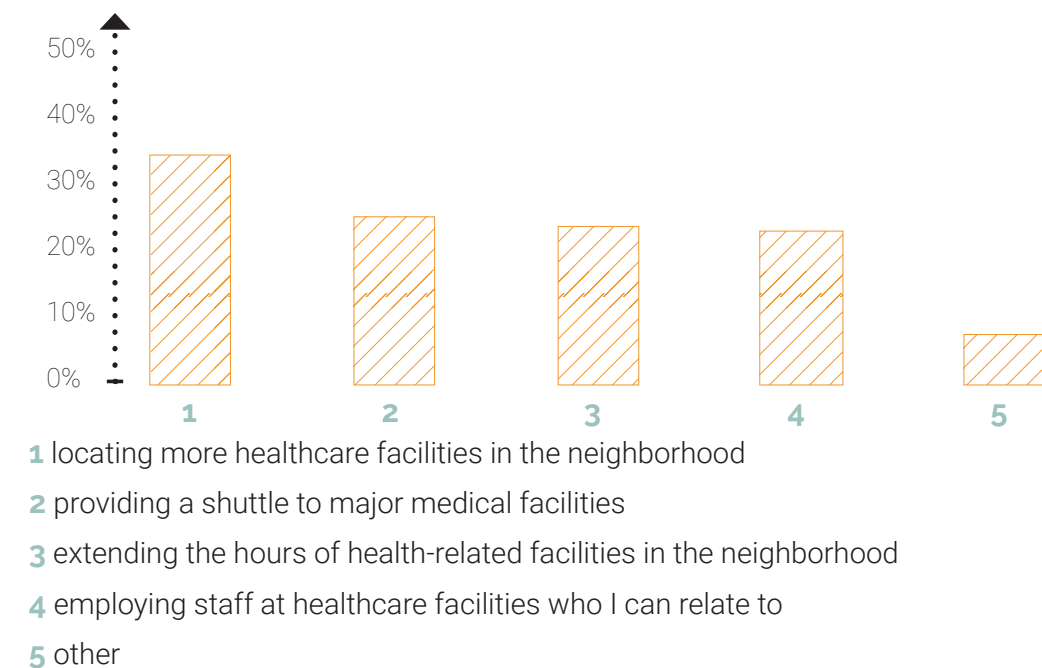
healthcare



HAS ANYONE IN YOUR HOUSEHOLD BEEN DIAGNOSED WITH ANY OF THE FOLLOWING HEALTH CONDITIONS?



HOW DO YOU THINK THE QUALITY OF YOUR HEALTHCARE COULD BE IMPROVED?



wellness & nutrition

HOW WOULD YOU RATE THE HEALTH OF THE NEIGHBORHOOD?



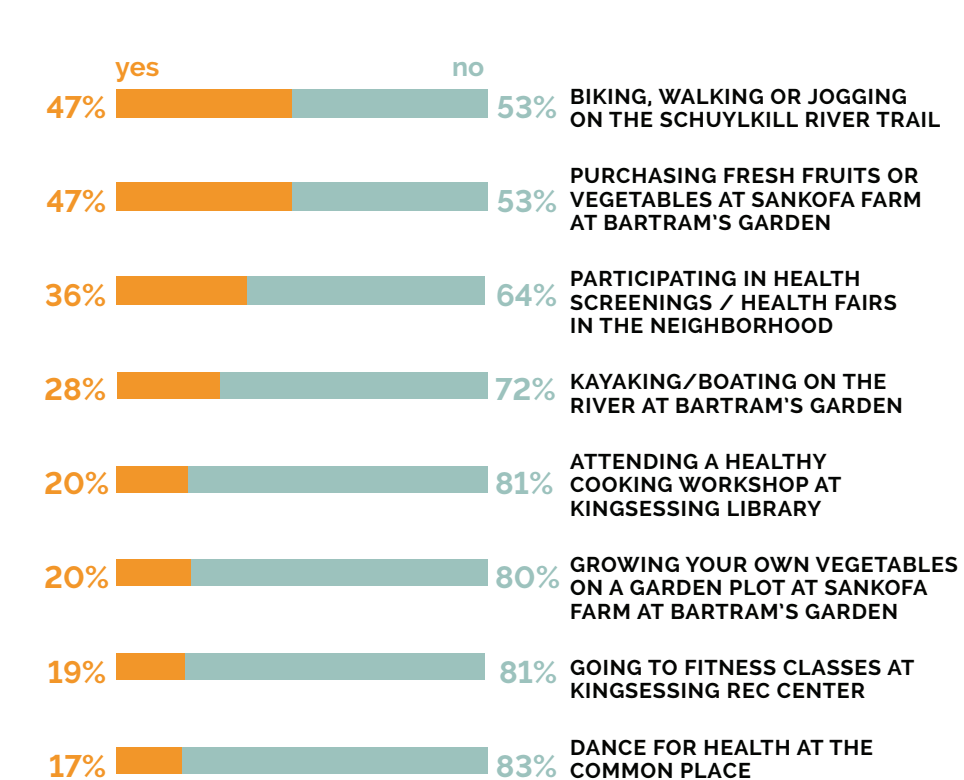
ARE THERE TIMES THERE IS NOT ENOUGH TO EAT IN YOUR HOUSEHOLD?



WHAT WOULD MAKE IT EASIER FOR PEOPLE TO EXERCISE IN THE NEIGHBORHOOD?



HAVE YOU OR ANYONE IN YOUR HOUSEHOLD PARTICIPATED IN ANY OF THE FOLLOWING ACTIVITIES?



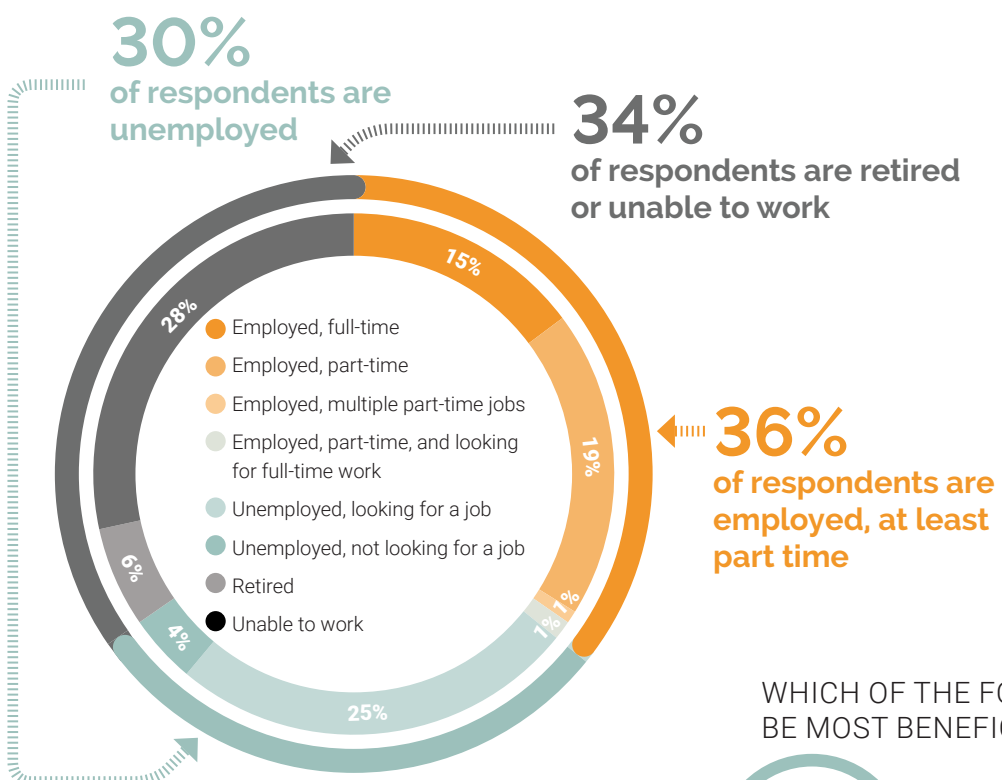
NEIGHBORHOOD RESPONDENTS ALSO RATED SAFETY, CLEANLINESS & AIR QUALITY AS THE LEAST HEALTHY

TOP 3 NEIGHBORHOOD SURVEY RESPONSES: 1-GREATER SAFETY, 2-NEW LOCAL GYM, 3-BETTER, BRIGHTER LIGHTING



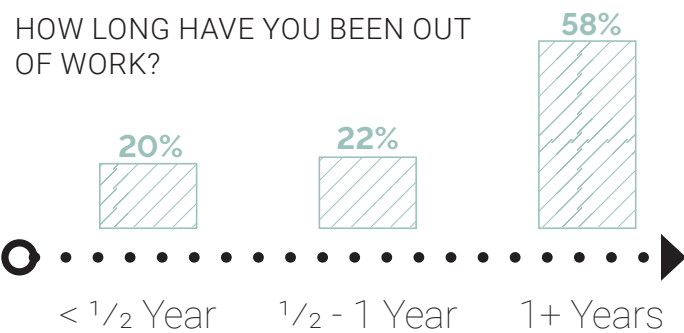
employment profile

Unemployment is a challenge for Bartram Village residents. 25% are unemployed looking for work versus 5% of neighborhood respondents. 36% are employed at least part-time vs. 52% of neighborhood residents. A high proportion of Bartram Village residents are also unable to work (28%) versus 9% of neighborhood survey respondents. This is reflected in the low income of residents. At the same time, 72% of neighborhood respondents have an annual income below \$50,000.

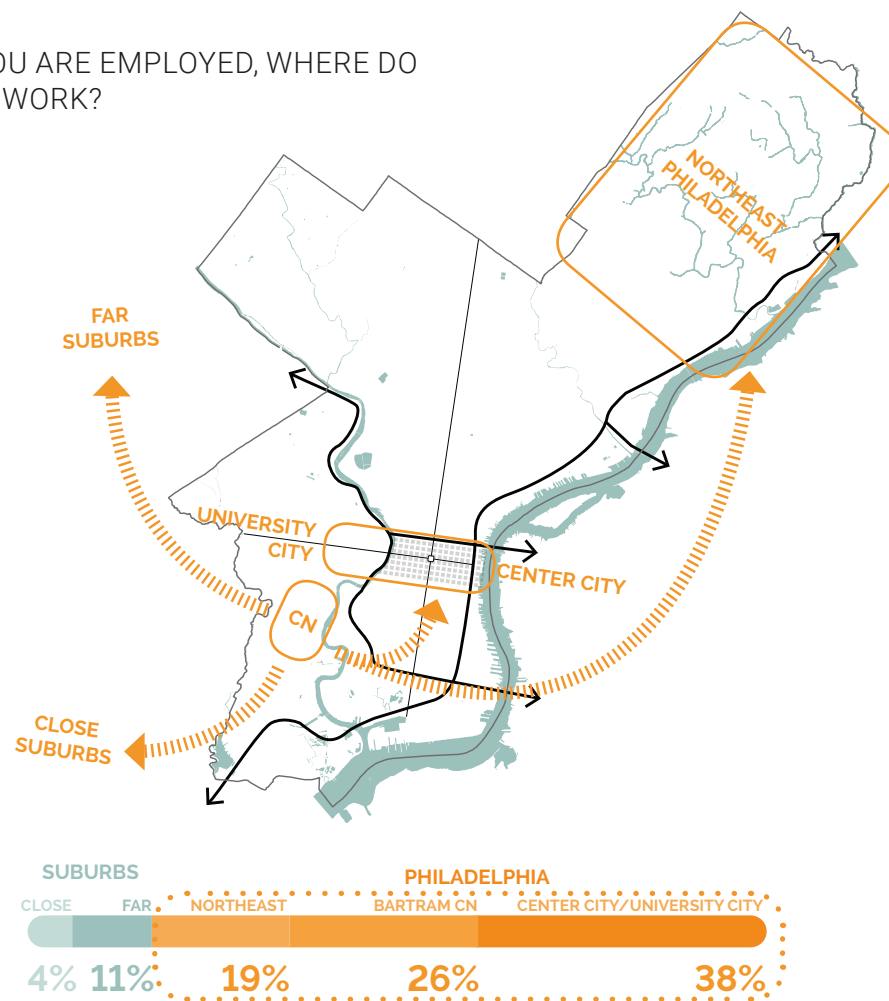


VS. APPROXIMATELY 38% OF NEIGHBORHOOD RESPONDENTS WHO ARE EMPLOYED FULL-TIME, 32% RETIRED, 14% EMPLOYED PART-TIME, 6% UNEMPLOYED, AND 9% UNABLE TO WORK

HOW LONG HAVE YOU BEEN OUT OF WORK?



IF YOU ARE EMPLOYED, WHERE DO YOU WORK?



WHICH OF THE FOLLOWING PROGRAMS WOULD BE MOST BENEFICIAL TO YOU?

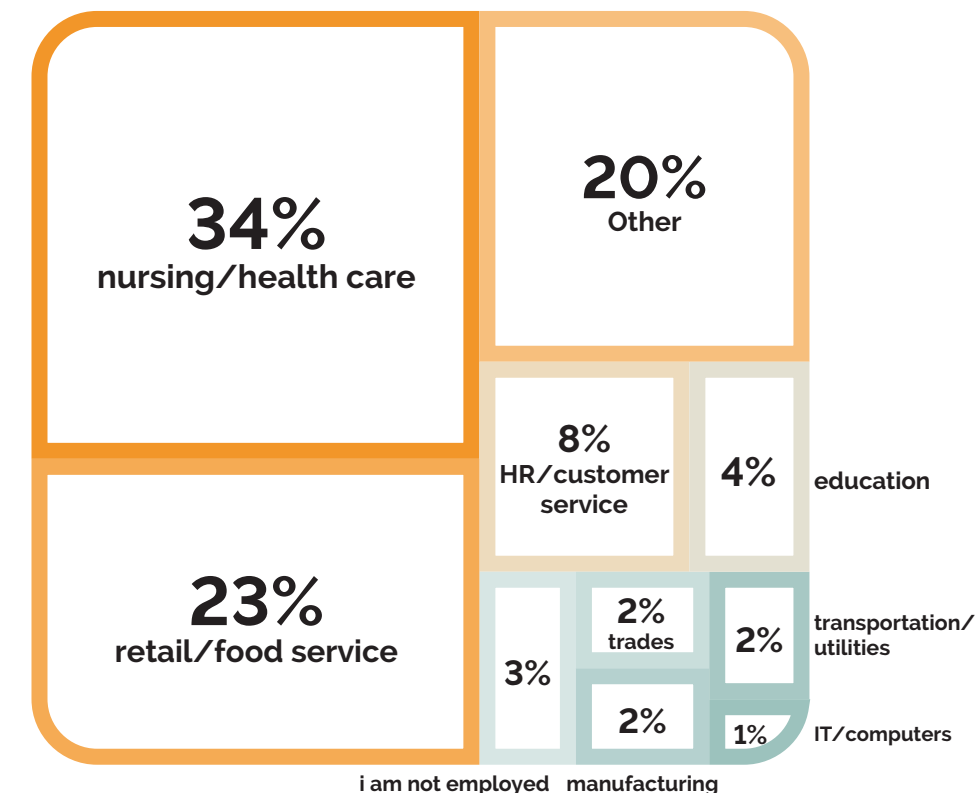
- #1** JOB FAIRS
- #2** A RENT FREEZE PROGRAM FOR THE FIRST YEAR OF EMPLOYMENT
- #3** CONTINUING EDUCATION LEADING TO A JOB-RELATED CERTIFICATE OR DEGREE PROGRAM

ANNUAL HOUSEHOLD INCOME OF NEIGHBORHOOD SURVEY RESPONDENTS	Percentage
\$0 TO \$20,000	29%
\$20,000 TO \$35,000	18%
\$35,000 TO \$50,000	25%
\$50,000 TO \$75,000	14%
\$75,000 TO \$100,000	8%
ABOVE \$100,000	5%

WHAT ARE SOME OF THE REASONS THAT PEOPLE IN THE NEIGHBORHOOD STRUGGLE TO GET A JOB OR STAY EMPLOYED?

- TOP 5 RESPONSES**
- 97** ISSUES FINDING CHILDCARE
 - 88** CRIMINAL HISTORY
 - 73** LACKING THE SKILLS NEEDED FOR AVAILABLE JOBS
 - 67** HAVING A HANDICAP OR DISABILITY OR CARING FOR SOMEONE WITH A DISABILITY
 - 63** NOT ENOUGH EDUCATION FOR AVAILABLE JOBS

WHAT BEST DESCRIBES THE TYPE OF WORK YOU DO?



WHICH OF THE FOLLOWING JOB TRAINING PROGRAMS WOULD INTEREST YOU?

- TOP 3 RESPONSES**
- NURSING/HEALTH CARE**
 - COOKING**
 - CUSTOMER SERVICE**
- I AM NOT INTERESTED IN JOB TRAINING PROGRAMS
 - SMALL BUSINESS / ENTREPRENEURSHIP
 - CODING/INFORMATION TECHNOLOGY/COMPUTERS
 - LAW ENFORCEMENT
 - PHARMACEUTICALS
 - VEHICLE MAINTENANCE
 - CARPENTRY / CONSTRUCTION
 - PLUMBING / ELECTRICAL
 - OTHER (PLEASE SPECIFY)

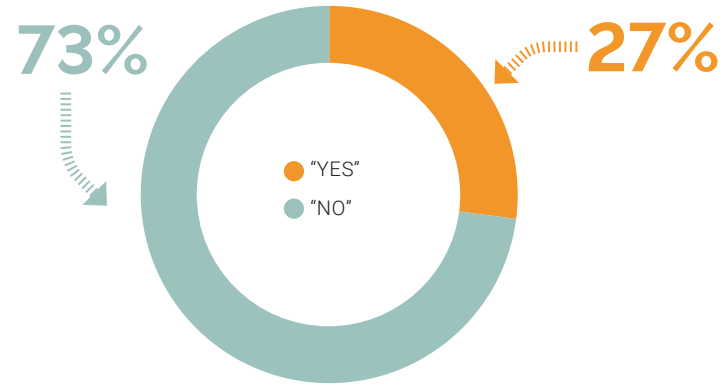
45% 35% 25% 15% 0%



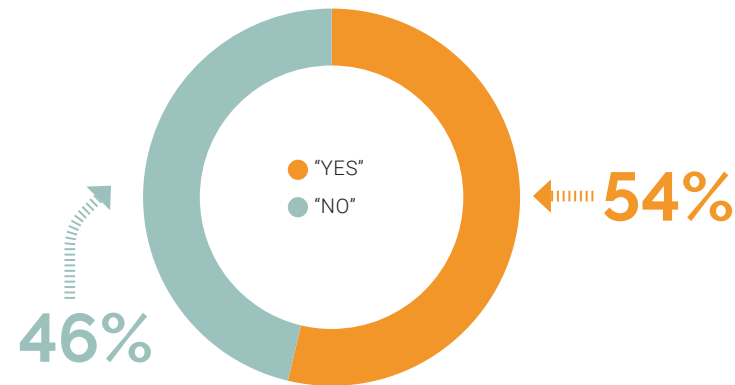
education profile

There is a large percentage of school-age children living in Bartram Village. The number of children under 5 participating in an early childhood education program is low at about 49%. Cost and difficulty finding a safe quality program were the reasons most children do not attend a program. Making families aware of available programs also seems to be a challenge to overcome. (Note: Very few neighborhood respondents—11 total—had children under 5, so the comparison data are limited.)

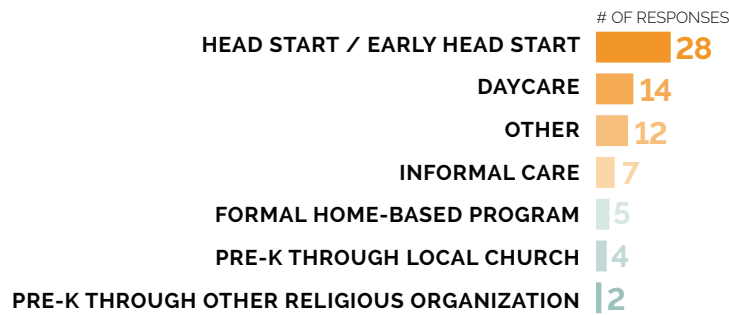
DO ANY CHILDREN UNDER AGE 5 LIVE IN YOUR HOUSEHOLD?



DO ANY CHILDREN AGES 5 TO 19 LIVE IN YOUR HOUSEHOLD?



DO YOUR CHILDREN UNDER 5 PARTICIPATE IN ANY OF THE FOLLOWING EARLY CHILDHOOD EDUCATION PROGRAMS



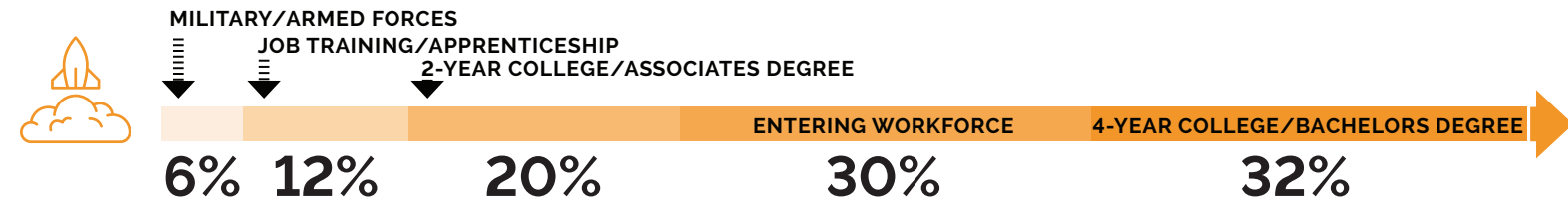
IF NOT, WHY DON'T THEY PARTICIPATE?



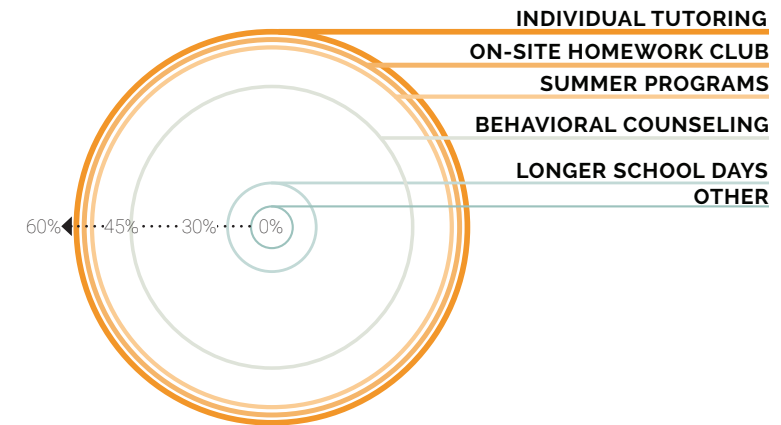
HOW WOULD YOU RATE THE QUALITY OF THESE EARLY CHILDHOOD EDUCATION PROGRAMS?



IF YOU HAVE HIGH SCHOOL-AGED CHILDREN, WHAT PATH ARE THEY TAKING AFTER HIGH SCHOOL?



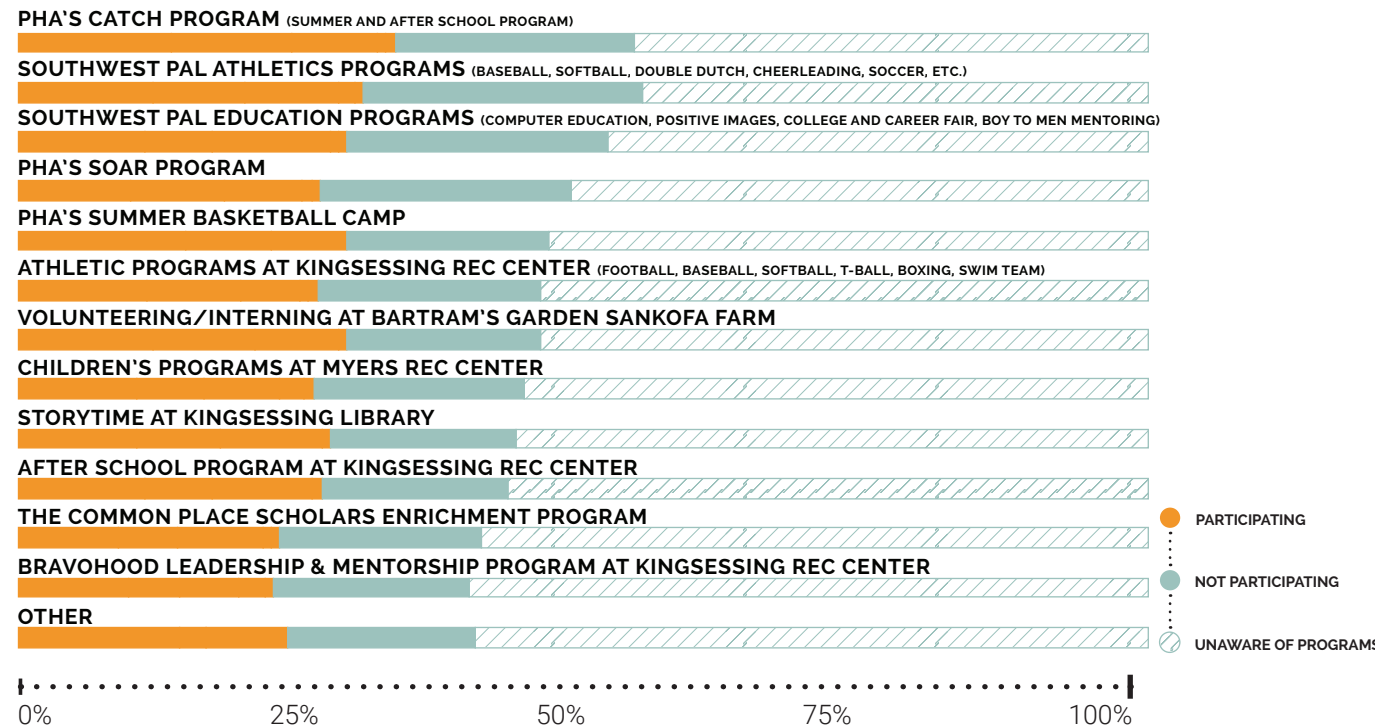
WHAT ADDITIONAL SERVICES WOULD HELP YOUR CHILD/CHILDREN DO WELL IN SCHOOL?



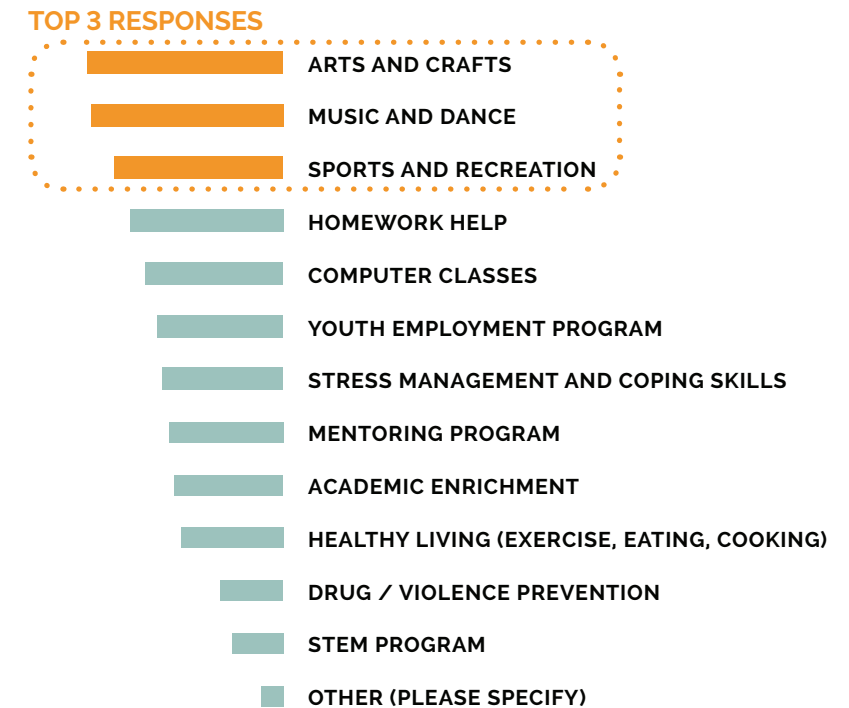
"UNAWARE OF AVAILABLE PROGRAMS"

#1 reason children do not participate in available programs
OTHER REASONS: COST & LOCATION

DO YOUR CHILDREN PARTICIPATE IN ANY OF THE FOLLOWING ACTIVITIES?



WOULD YOU BE INTERESTED IN ANY OF THESE PROGRAMS FOR YOUR CHILDREN?



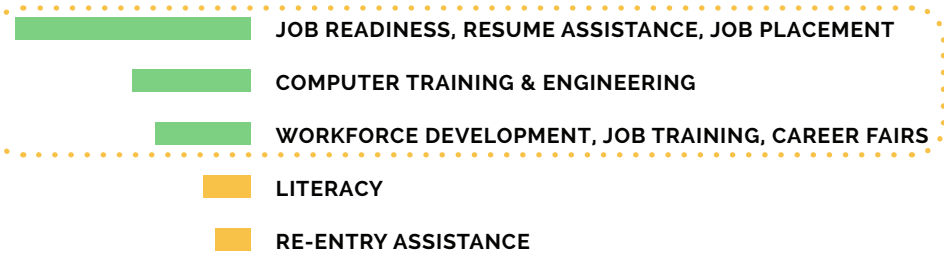


a view of the neighborhood

Public safety appears to one of the most pressing issues for Bartram Village and neighborhood residents, affecting the sense of security and the ability to feel comfortable exercising or allowing children to play outside. A particular challenge for Bartram Village residents is the low number of households with a computer with internet access at home. This likely makes accessing program information more difficult. It also makes doing homework or learning about job training/employment opportunities harder. Supportive programs seem available in the neighborhood, yet awareness of the programs seems to be a bigger challenge.

WHAT TYPES OF SERVICES DO YOU FEEL ARE MISSING IN THE NEIGHBORHOOD THAT YOU WOULD LIKE TO HAVE ACCESS TO?

TOP 3 RESPONSES



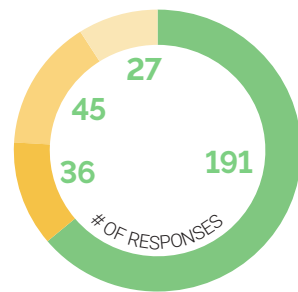
DO YOU HAVE A COMPUTER WITH INTERNET ACCESS AT HOME?



HOW DO YOU TYPICALLY FIND INFORMATION ABOUT YOUR NEIGHBORHOOD?



IF NOT AT HOME, HOW DO YOU AND MEMBERS OF YOUR HOUSEHOLD ACCESS THE INTERNET?

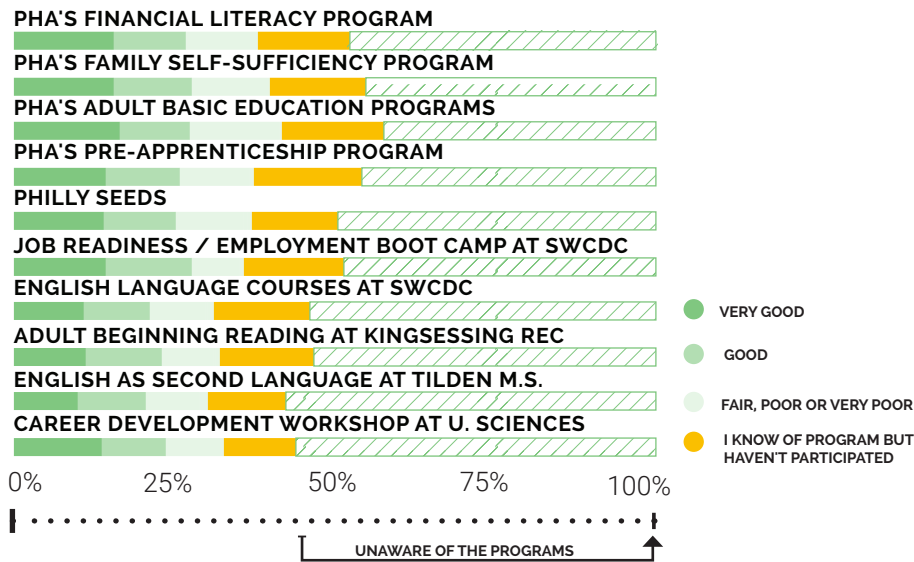


- *CELL PHONE*
- *TABLET OR OTHER DEVICE*
- *LOCAL COMPUTER LAB*
- *NOT APPLICABLE*

WHAT CHANGES WOULD MAKE YOUR NEIGHBORHOOD FEEL SAFER TO YOU?



RATE THE QUALITY OF THE SERVICES / PROGRAMS YOU HAVE USED:



WHICH OF THE FOLLOWING ISSUES NEGATIVELY IMPACT THE NEIGHBORHOOD?

TOP 3 RESPONSES



NEIGHBORHOOD RESIDENT RESPONSES: 1- LITTER 2-LIGHTING 3-SIDEWALK CONDITIONS

"KINGSESSING REC CENTER"

#1 park or green space that residents would most like to see improved or renovated

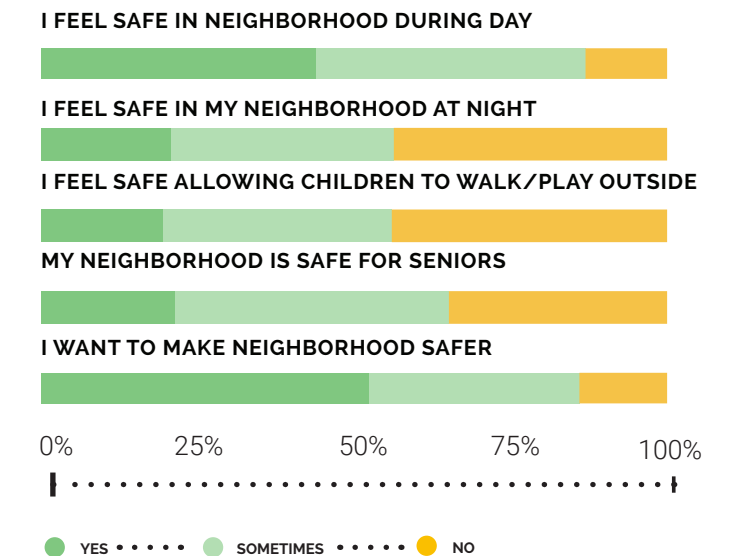
#2 48TH & WOODLAND

#3 63RD & LINDBERGH PARK

VS. NEIGHBORHOOD RESPONDENTS:



HOW DO YOU FEEL ABOUT SAFETY IN THE NEIGHBORHOOD?



NEIGHBORHOOD RESPONSES ECHO THESE RESULTS



Connectivity and transportation

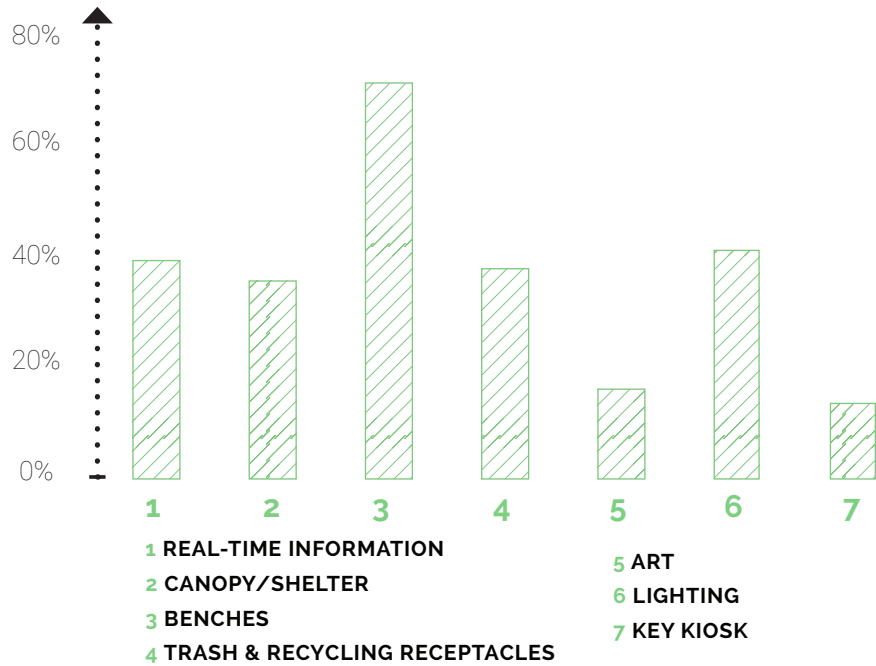


Residents use the trolley stop at Lindbergh Blvd & 54th Street most often

WHAT FORM OF TRANSPORTATION DO YOU TAKE MOST OFTEN?



WHAT AMENITIES WOULD YOU LIKE TO SEE AT IMPROVED TROLLEY STOPS?



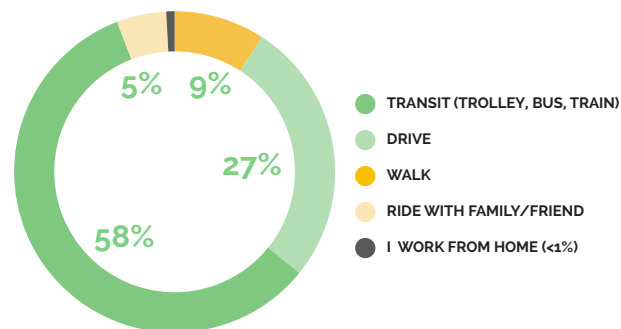
NEIGHBORHOOD SURVEY RESPONSES:
1-LIGHTING 2-TRASH & RECYCLING 3-BENCHES



"MEDIAN OF LINDBERGH BLVD, BETWEEN 56TH AND 58TH STREETS"

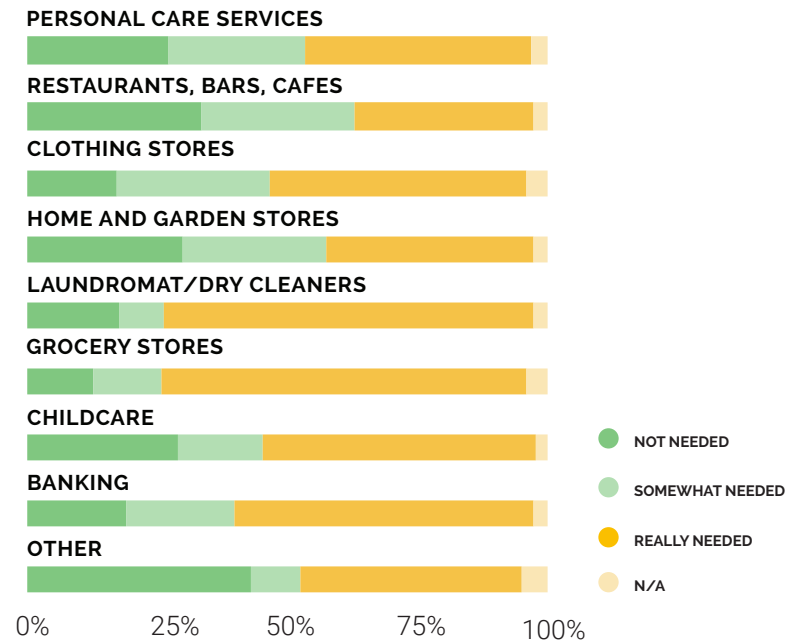
#1 site or location residents would most like to see transformed, cleaned and greened

IF EMPLOYED, HOW DO YOU GET TO WORK MOST OFTEN?



Shopping & services

DO YOU THINK THESE SERVICES ARE NEEDED IN THE NEIGHBORHOOD?



VS. NEIGHBORHOOD RESPONDENTS:



WHICH OF THE FOLLOWING AMENITIES ARE NEEDED MOST IN THE NEIGHBORHOOD?



TOP 3 NEIGHBORHOOD SURVEY RESPONSES:
1-CLEAN, GREEN VACANT LOTS
2-FARMERS MARKET
3-PLAYGROUND/TOT LOT

WOULD YOU LIKE TO SEE MORE COMMERCIAL / RETAIL BUSINESSES NEAR LINDBERGH BOULEVARD & GRAYS AVENUE?



WHAT WOULD MAKE CHESTER AVENUE AND WOODLAND AVENUE COMMERCIAL CORRIDORS MORE INVITING?

BARTRAM VILLAGE RESPONDENTS

- 1 Safer, more visible crosswalks
- 2 Benches (or other street furniture)
- 3 More trash and recycling receptacles
- 4 Safer, more attractive routes to the corridors
- 5 More street trees and flowers

NEIGHBORHOOD SURVEY RESPONDENTS

- 1 Brighter lighting
- 2 Facade improvements/beautification
- 3 More trash and recycling receptacles
- 4 Safer, more visible crosswalks
- 5 More street trees and flowers